



Hiroshima City  
**EBAYAMA MUSEUM OF METEOROLOGY**  
Former Hiroshima Local Meteorological Observatory  
[Hiroshima City Important Tangible Cultural Property]

The former Hiroshima Regional Meteorological Observatory was built in 1934 as the Hiroshima Prefectural Weather Observatory, transferred to national management in 1939, and relocated to the joint government building in Kamihaccho bori, Naka Ward in 1987.

Although the observatory was damaged by the atomic bomb in 1945, its staff continued to conduct meteorological observations without a single day's break. In September of the same year, the Makurazaki Typhoon struck Hiroshima, and the events of that time are described in detail in Kunio Yanagida's non-fiction book, "The Blank Weather Map."

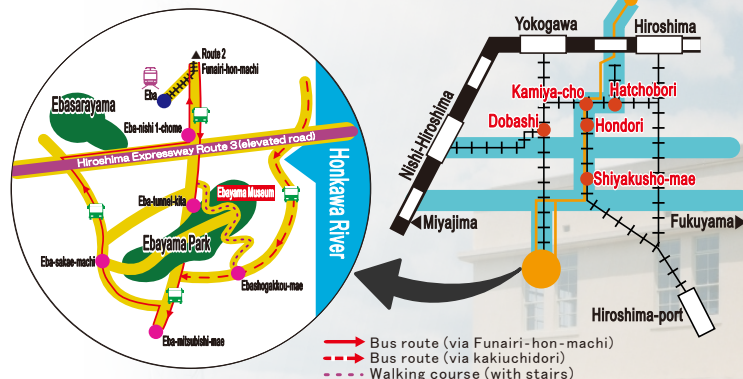
The building is made of reinforced concrete and combines the characteristics of pre-war buildings with new modern designs, making it an extremely excellent building in terms of both architectural technique and design. In July 2000, it was designated an Important Tangible Cultural Property of Hiroshima City.

Due to the war, construction of pre-war reinforced concrete buildings ceased around 1939. For this reason, the former Hiroshima Regional Meteorological Observatory can be said to be one of the last pre-war reinforced concrete buildings.

HIROSHIMA CITY EBAYAMA MUSEUM OF METEOROLOGY

## Information

- Opening hours  
9:00 - 17:00 (last entry at 16:30)
- Closed  
Every Monday (except on public holidays), the day after public holidays, and the New Year's holiday period, and other temporary closing days.  
※Closing days may change, so please check the website for details.
- Admission fee  
Adults : ¥100 (¥80), Seniors and High School Students : ¥50 (¥40),  
Junior High School Students and Under : Free.  
※Prices in parentheses are for groups of 30 or more.  
※High school student is someone who is enrolled in a high school.  
Someone who is up until the first March 31st after their 18th birthday.  
※Senior rates are available for those 65 and older (official proof of age required).  
※Free admission for people with disabilities and their caregivers(disability certificate required).  
※For additional information about admission discounts, please contact the museum directly or website.
- Free admission  
May 5th - May 11th (excluding Closed days)※High school students only.  
Saturdays (excluding summer, winter, and spring breaks and public holidays)  
※High school students only.  
The Sunday closest to Meteorological Day (June 1st) and Culture Day (November 3rd).
- Access  
Bus : Hiroden Bus bound for Eba via Funairi-hon-machi. Get off at Eba Sakaemachi and walk about 500m.  
Tram :Hiroshima Electric Railway bound for Eba. Get off at Eba and walk about 1km.





**HIROSHIMA CITY  
EBAYAMA MUSEUM OF METEOROLOGY**  
40-1,1-chome,Eba-minami,Naka-ku,Hiroshima City,730-0835  
☎(082)231-0177 FAX(082)234-1013  
URL <https://www.ebayama.jp>



**Hiroshima City  
EBAYAMA MUSEUM OF METEOROLOGY**  
Former Hiroshima Local Meteorological Observatory  
[Hiroshima City Important Tangible Cultural Property]

## Museum Guide



Hiroshima City Culture Foundation



## 2nd floor



### Weather experience

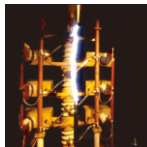
Experience of 20m/sec wind, clouds and spiral of typhoon, 300kV discharge.



Topuu-capsule



Typhoon-box



Franklin's laboratory



### History of Meteorological Observatory

Old meteorological instruments, a wall damaged by the A-bomb, etc.



Glass fragments stuck in the wall by the atomic bomb blast

### Heavy Rain and Strong Wind Educational Attraction

Experience the storm on a large monitor.



### Experience corner

Experience using a mirror.



※The exhibit contents may differ from the photo.



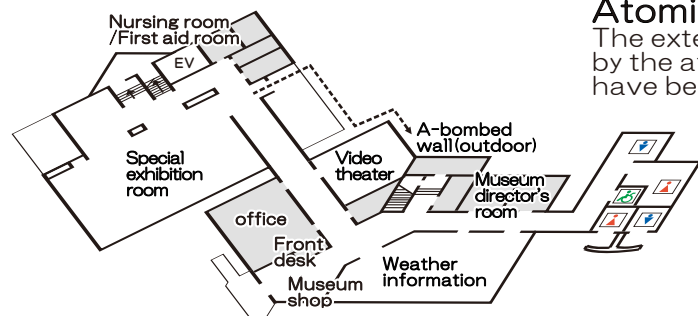
The former Hiroshima Regional Meteorological Observatory upon completion.

## 1st floor



### Video theater

Four Seasons of Hiroshima, Kunio Yanagida's non-fiction book "The Blank Weather Map", Water way system(water cycle on the earth).



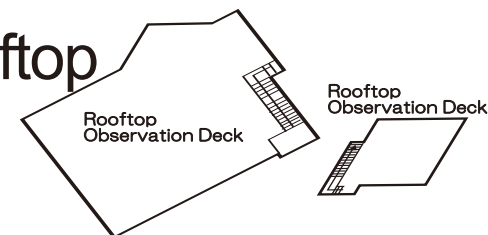
### Atomic bombed wall

The exterior walls damaged by the atomic bomb blast have been preserved.



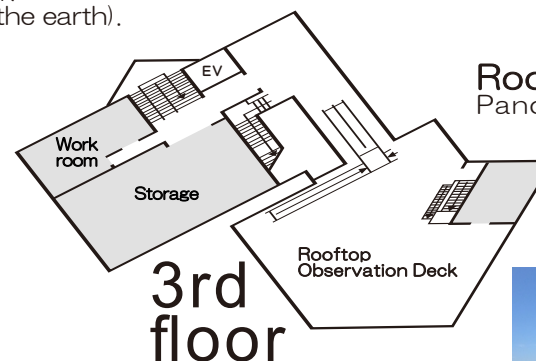
Window frames bent by the blast

## Rooftop



### Rooftop Observation Deck

Panoramic view of Hiroshima city.



## 3rd floor



### Weather information

Weather observation, weather forecast and library.



### Museum shop

Sales of weather and science experiment goods, books, etc.

